

DRAWING NUMBER
46/203

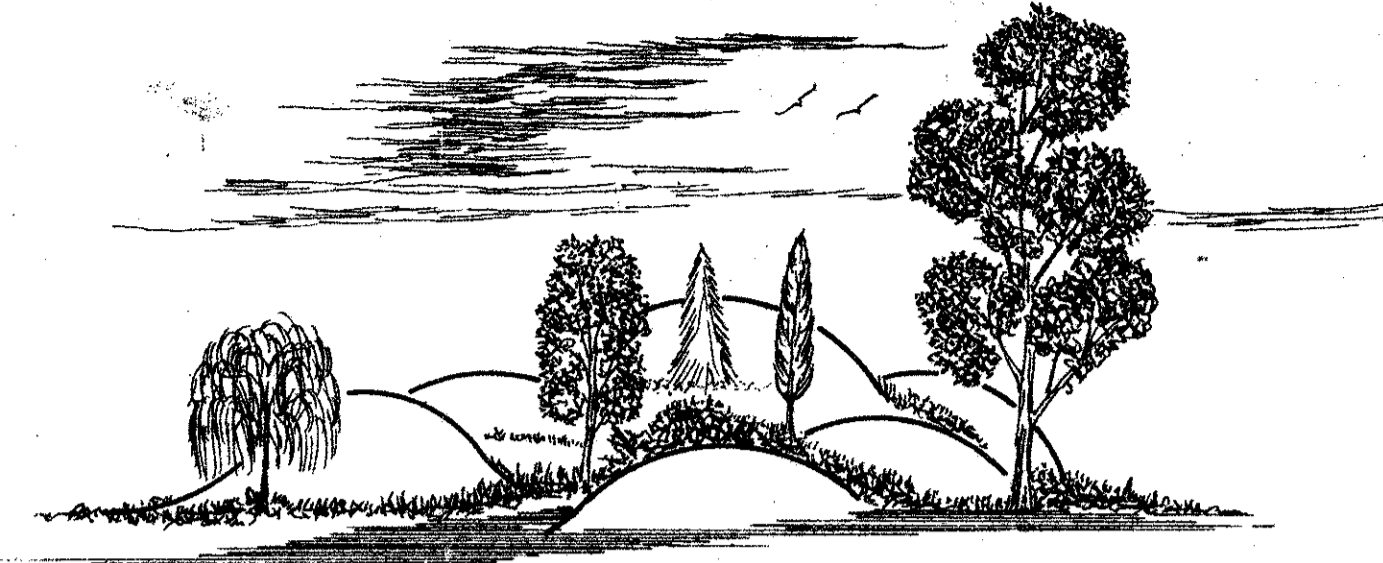
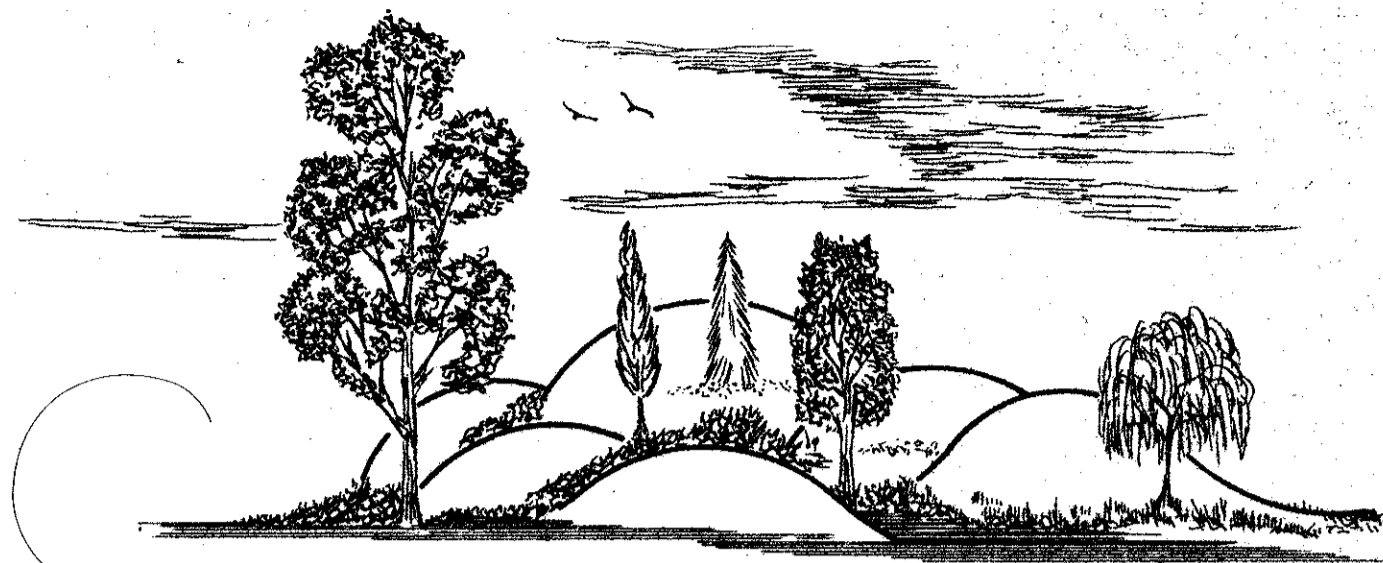
DRAWING NUMBER

DRAWING NUMBER

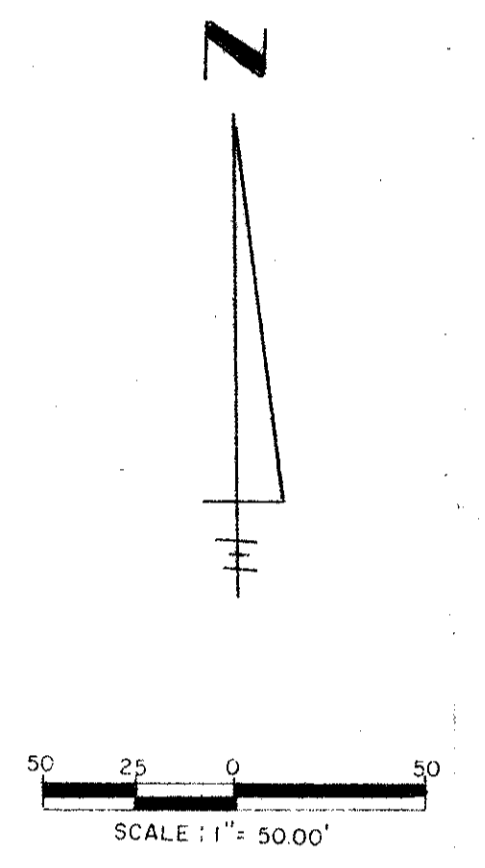
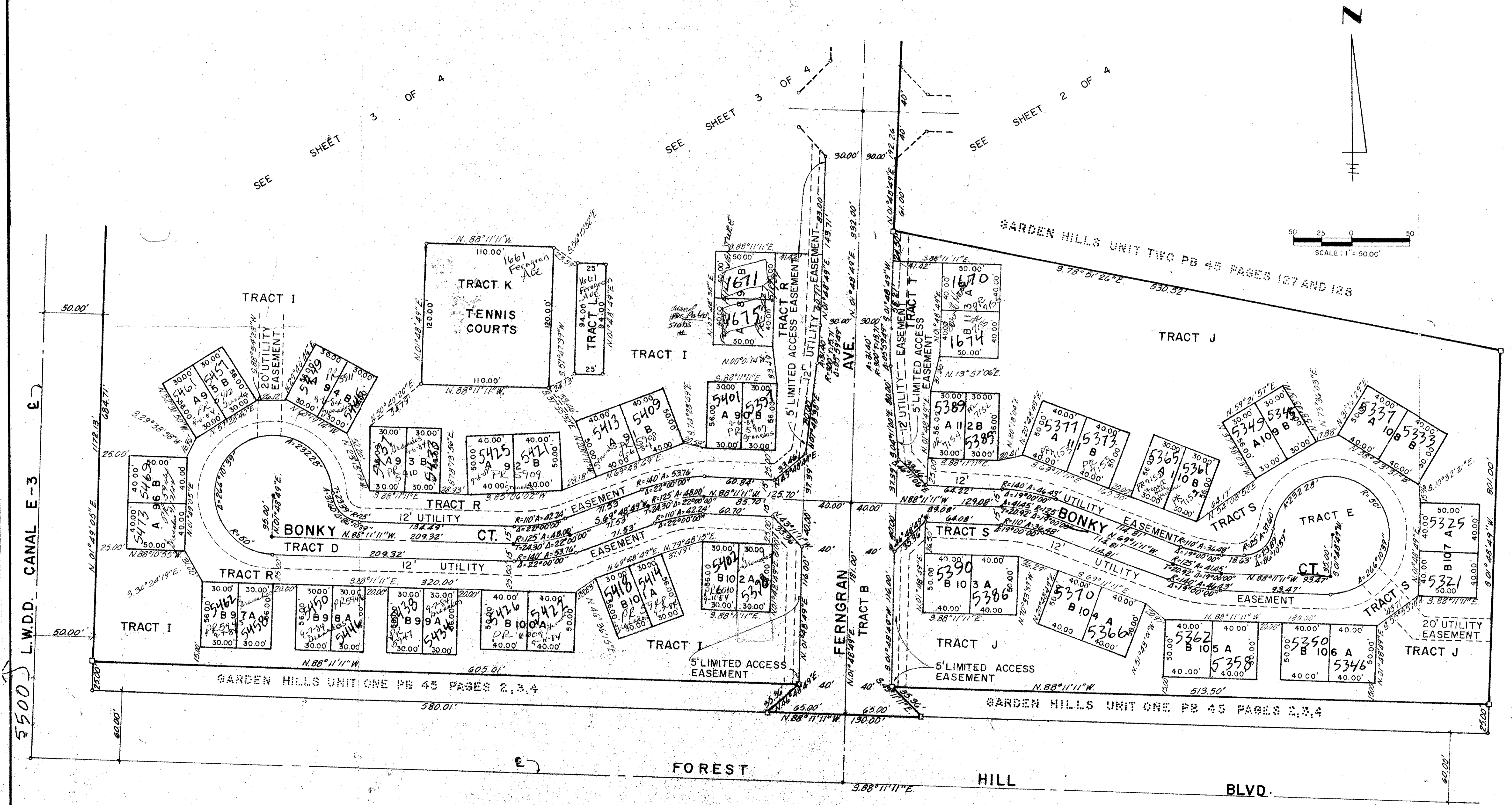
DRAWING NUMBER

203

PART OF A PLANNED UNIT DEVELOPMENT GARDEN HILLS UNIT THREE



A REPLAT OF TRACTS G AND D OF GARDEN HILLS UNIT ONE AS RECORDED IN PLAT BOOK 45 PAGES 2,3 AND 4 AND A REPLAT OF TRACT C GARDEN HILLS UNIT TWO AS RECORDED IN PLAT BOOK 45 PAGES 127 AND 128 OF THE PUBLIC RECORDS OF PALM BEACH COUNTY, FLORIDA AND A SUBDIVISION IN THE NORTH 1/2 OF THE SOUTHEAST 1/4 OF SECTION II, TOWNSHIP 44 SOUTH, RANGE 42 EAST IN PALM BEACH COUNTY, FLORIDA.
JULY 1983



GARDEN HILLS UNIT TWO PB 45 PAGES 127 AND 128

46/203

0250-302

SUBDIVISION #	114442
BOOK	46
FLOOD ZONE	B
QUAD #	32
SE	
PUD NAME	